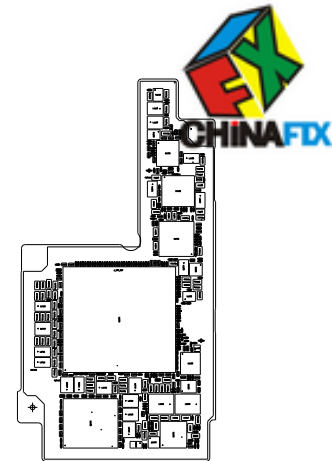


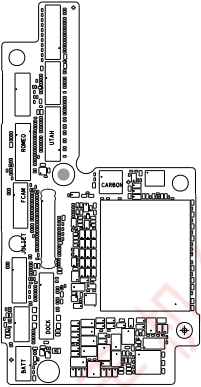
TOP SIDE ASSEMBLY

<div>APPLE</div> <div>THIS IS THE PROPERTY OF APPLE AND IT BE REPRODUCED</div>				<div>TITLE</div> <div>PCBF Y891</div> <div>TOP MLB</div>	
<div>ORIG DIV</div>	<div>DESIGNER</div> <div>KEN KIJPLINGER</div>	<div>DATE</div> <div>03/31/17</div>	<div>SCALE</div> <div>1:1</div>	<div>DRAWING NUMBER</div> <div>820-00363-09</div>	
<div>NOTES:</div> <div>ARTWORK VIEWED FROM COMPONENT SIDE. PCB SHALL CONFORM TO STANDARDS AS DEFINED IN APPLE SPECIFICATION 080-2265 (FLEXIBLE PRINTED CIRCUIT BOARDS) OR 062-0073 (MULTI- LAYER BOARDS) AS APPLICABLE.</div>				<div>NOTICE OF PROPRIETARY PROPERTY</div> <div>THE INFORMATION CONTAINED HEREIN IS THE PROPRIETARY PROPERTY OF APPLE</div> <div>THE POSSESSOR AGREES TO THE FOLLOWING</div> <div>(I) TO MAINTAIN THIS DOCUMENT IN CONFIDENCE</div> <div>(II) NOT TO REPRODUCE OR COPY IT</div> <div>(III) NOT TO REVEAL OR PUBLISH IT</div>	




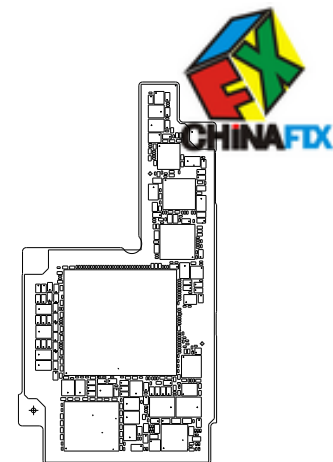
BOTTOM SIDE ASSEMBLY

NOTICE OF PROPRIETARY PROPERTY THE INFORMATION CONTAINED HEREIN IS THE PROPERTY OF APPLE THE POSSESSOR AGREES TO THE FOLLOWING (I) TO MAINTAIN THIS DOCUMENT IN CONFIDENCE (II) NOT TO REPRODUCE OR COPY IT (III) NOT TO REVEAL OR PUBLISH IT		DRAWING NUMBER 850-00863-09		TITLE TOP MLB, X861	
NOTES: 065-0073 (MULTI-LAYER BOARDS) AS APPLICABLE. 080-SS65 (FLEXIBLE PRINTED CIRCUIT BOARDS) OR TO STANDARD AS DEFINED IN APPLE SPECIFICATION NETWORK VIEWED FROM COMPONENT SIDE. PCB SHALL CONFORM		DESIGNER KEN K		DATE 05/31/17	
SCALE 1:1		ORIG DIV KEN K		APPROVED KEN K	



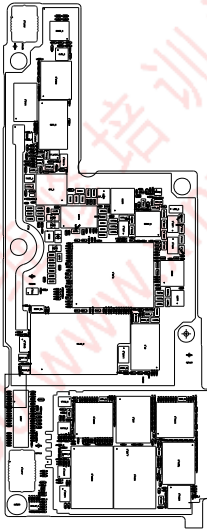
TOP SIDE ASSEMBLY

APPLE 				TITLE PCB Y891 TOP MLB	
THIS IS THE PROPERTY OF APPLE AND IT BE RECOVERED					
ORIG DIV	DESIGNER KEN KIPLINGER	DATE 03/31/17	SCALE 1:1	DRAWING NUMBER 820-00363-09	
NOTES: ARTWORK VIEWED FROM COMPONENT SIDE. PCB SHALL CONFORM TO STANDARDS AS DEFINED IN APPLE SPECIFICATION 080-2265 (FLEXIBLE PRINTED CIRCUIT BOARDS) OR 062-0073 (MULTI- LAYER BOARDS) AS APPLICABLE.				NOTICE OF PROPRIETARY PROPERTY THE INFORMATION CONTAINED HEREIN IS THE PROPRIETARY PROPERTY OF APPLE THE POSSESSOR AGREES TO THE FOLLOWING (I) TO MAINTAIN THIS DOCUMENT IN CONFIDENCE (II) NOT TO REPRODUCE OR COPY IT (III) NOT TO REVEAL OR PUBLISH IT	



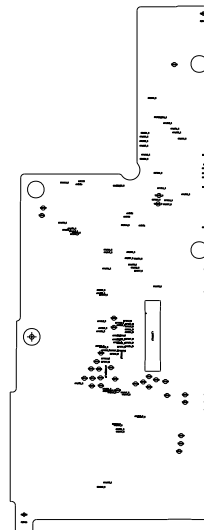
BOTTOM SIDE ASSEMBLY

NOTICE OF PROPRIETARY PROPERTY THE INFORMATION CONTAINED HEREIN IS THE PROPERTY OF APPLE THE POSSESSOR AGREES TO THE FOLLOWING (I) TO MAINTAIN THIS DOCUMENT IN CONFIDENCE (II) NOT TO REPRODUCE OR COPY IT (III) NOT TO REVEAL OR PUBLISH IT		DRAWING NUMBER 850-00863-09			DATE 05/31/17		DESIGNER KEN K		ORIG DIV 080-SS62 (FLEXIBLE PRINTED CIRCUIT BOARDS) OR 085-0073 (MULTI-LAYER BOARDS) AS APPLICABLE. NOTES: DRAWING VIEWED FROM COMPONENT SIDE. PCB SHALL CONFORM TO STANDARDS AS DEFINED IN APPLE SPECIFICATION
TITLE TOP MLB, X861		400-800-9990			SCALE 1:1		APPROVED 05/31/17		THIS IS PROPERTY OF APPLE INC. ALL RIGHTS RESERVED.
迅维职业技能培训中心		迅维职业技能培训中心			迅维职业技能培训中心		迅维职业技能培训中心		迅维职业技能培训中心



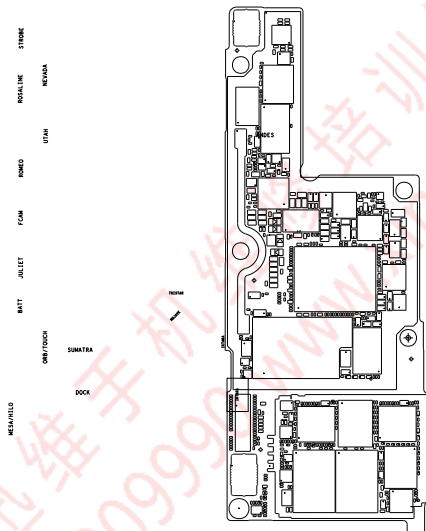
TOP SIDE ASSEMBLY

<div>APPLE</div> <div>THIS IS THE PROPERTY OF APPLE AND IT BE REPRODUCED</div>				<div>TITLE</div> <div>PCBF Y1893 MLB BOT</div>
<div>ORIG DIV</div>	<div>DESIGNER</div> <div>TIM REID</div>	<div>DATE</div> <div>04/06/17</div>	<div>SCALE</div> <div>1:1</div>	<div>DRAWING NUMBER</div> <div>820-00369-06</div>
<div>NOTES:</div> <div>ARTWORK VIEWED FROM COMPONENT SIDE. PCB SHALL CONFORM TO STANDARDS AS DEFINED IN APPLE SPECIFICATION 080-2265 (FLEXIBLE PRINTED CIRCUIT BOARDS) OR 062-0073 (MULTI- LAYER BOARDS) AS APPLICABLE.</div>				<div>NOTICE OF PROPRIETARY PROPERTY</div> <div>THE INFORMATION CONTAINED HEREIN IS THE PROPRIETARY PROPERTY OF APPLE</div> <div>THE POSSESSOR AGREES TO THE FOLLOWING</div> <div>(I) TO MAINTAIN THIS DOCUMENT IN CONFIDENCE</div> <div>(II) NOT TO REPRODUCE OR COPY IT</div> <div>(III) NOT TO REVEAL OR PUBLISH IT</div>




BOTTOM SIDE ASSEMBLY

ART FILM - pdf_bot_assem		迅维职业技能培训中心		400-800-9990	
NOTES: 065-0013 (MULTI-LAYER BOARDS) AS APPLICABLE. 080-SS02 (FLEXIBLE PRINTED CIRCUIT BOARDS) OR TO STANDARDS AS DEFINED IN APPLE SPECIFICATION MWORK VIEWED FROM COMPONENT SIDE. PCB SHALL CONFORM		TIM RELEASED 01/06/17		DATE 01/06/17	
ORIG DIV		DESIGNER		SCALE	
DRAWING NUMBER		TITLE		MLB BOT	
850-00800-06		850-00800-06		850-00800-06	
NOTICE OF PROPRIETARY PROPERTY THE INFORMATION CONTAINED HEREIN IS THE PROPERTY OF APPLE THE POSSESSOR AGREES TO THE FOLLOWING (I) TO MAINTAIN THIS DOCUMENT IN CONFIDENCE (II) NOT TO REPRODUCE OR COPY IT (III) NOT TO REVEAL OR PUBLISH IT		400-800-9990		400-800-9990	



TOP SIDE ASSEMBLY

APPLE 				TITLE
THIS IS THE PROPERTY OF APPLE AND NOT BE REPRODUCED				PCBF Y1893 MLB BOT
ORIG DIV	DESIGNER	DATE	SCALE	DRAWING NUMBER
	TIM REID	04/06/17	1:1	820-00369-06
NOTES: ARTWORK VIEWED FROM COMPONENT SIDE. PCB SHALL CONFORM TO STANDARDS AS DEFINED IN APPLE SPECIFICATION 080-2265 (FLEXIBLE PRINTED CIRCUIT BOARDS) OR 062-0073 (MULTI- LAYER BOARDS) AS APPLICABLE.				NOTICE OF PROPRIETARY PROPERTY THE INFORMATION CONTAINED HEREIN IS THE PROPRIETARY PROPERTY OF APPLE THE POSSESSOR AGREES TO THE FOLLOWING (I) TO MAINTAIN THIS DOCUMENT IN CONFIDENCE (II) NOT TO REPRODUCE OR COPY IT (III) NOT TO REVEAL OR PUBLISH IT